



Company Overview



Rev 26.1.2



Vision Statement:

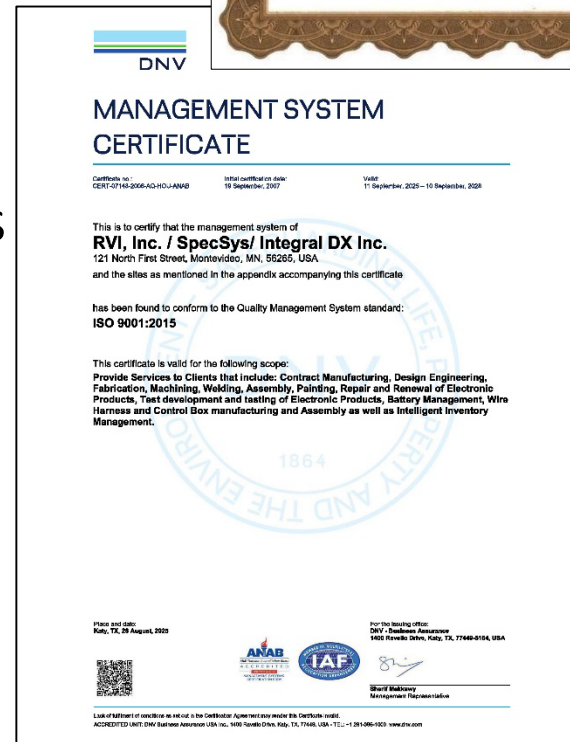
Embrace those who respect, honor and value relationships.

Not Just Words! This is key to success of **RITALKA, Inc.** & our clients.



Outline:

- History
- Organization: Wald Holdings
- Facilities
- The Numbers
- SpecSys, Inc. Offering & Projects
- RVI, Inc. Offering & Projects
- Integral dx, Inc. Products
- RITALKA, Inc. Culture Slide

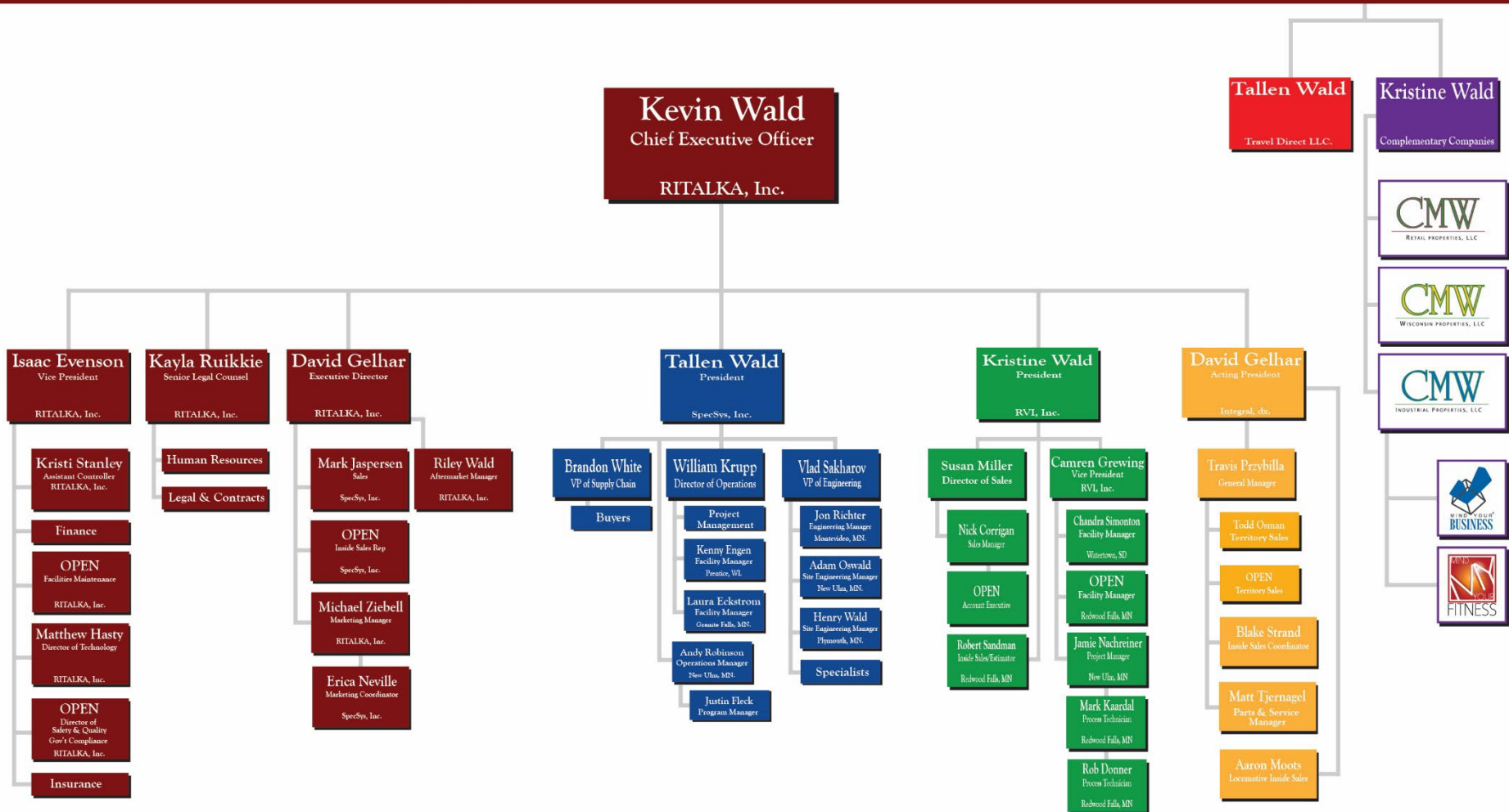


History:

- 1997: **RITALKA, Inc.** & **SpecSys, Inc.** founded.
- 1999: Acquisition of **Ingram Rollers, Inc.**
- 1999: **SpecSys, Inc.** adds manufacturing capabilities
- 2001: Minnesota River FLOODS; Geese at the front door
- 2002: **SpecSys, Inc.** expansion of 110,000 ft², Granite Falls, MN
- 2003: Sale of **Ingram Rollers, Inc.** inventory and intellectual property
- 2005: **SpecSys, Inc.** expansion of 15,000 ft², Redwoods Falls, MN
- 2007: Launch **RVI, Inc.**, Redwood Falls, MN
- 2008: **SpecSys, Inc.** expansion of 83,000 ft², Benson, MN
- 2012: **SpecSys, Inc.** expansion of 65,000 ft², New Ulm, MN
SpecSys, Inc. offices expansion Cloquet, MN
- 2013: Launch of **Integral dx Incorporated**
Launch of **SpecSys6, Inc.** Engineering Brand
- 2015: **SpecSys, Inc.** & **RVI, Inc.** expansion of 120,000 ft², Watertown, SD
- 2016: **SpecSys, Inc.** expansion of 210,000 ft², Prentice, WI
- 2019: Expansion offices, Plymouth, MN
Integral dx, Inc. acquisition of Easi-Miner
- 2020: **Integral dx, Inc.** acquisition of Schwing Concrete Mixer
RVI, Inc. expands into Wire Harness Production
- 2023: **Integral dx, Inc.** Re-Acquisition of **Ingram Rollers, Inc.**
Integral dx, Inc. development of EV Redi-Mix
Integral dx, Inc. development of Switcher Locomotive
- 2025: **Integral dx, Inc.** delivers first in NEW family of Switcher Locomotives to the U.S. Navy



Wald Holdings: Kevin R. & Colleen M. Wald



Facilities:



Plymouth, MN: office only



Montevideo, MN: office only



Granite Falls, MN: 110,000 ft²



Redwood Falls, MN: 46,000 ft²



Prentice, WI: 210,000 ft²



New Ulm, MN: 70,000 ft²



Watertown, SD: 120,000 ft²



The Numbers:

- 7 Locations, 3 US States
 - 675,000 ft² under roof
- 250+ employees
 - 5,000 hours per month engineering services
 - 25,000 hours per month heavy manufacturing services
 - 8,000 hours per month electronic, battery & wire harness related services
- All operations are ISO-9001:2015 certified
 - SpecSys, Inc.: Agriculture, Railway, Construction, Mining, Utilities, Oil & Energy, Forestry, Material Handling
 - RVI, Inc.: Custom Wire Harnesses and Cable Boxes for Mobile & Commercial Equipment
 - Integral dx, Inc.: Concrete, Asphalt, Utilities, Mining, Agriculture



SpecSys, Inc.



On Time — On Budget — Done Right — Done Safe



SpecSys6 Offering:

Our Engineering team focuses on 6 main aspects to deliver the best project on time, and on budget



• Design

- Specification Development
- Conceptual Designs
- Detail Designs
- Design Drafting
- Schematic Generation
- BOM Development
- Vendor Support & Supplier Selection
- Cost Roll-up

• Controls

- Integrate vital controls development through product systems engineering
- Tackle the big projects including real-time algorithms in closed loop feedback processing
- Develop control systems tailored to your exact requirements
- Integrate control systems tailored to your exact requirements
- Integrate control architecture of software, controllers HMI's and sensors to machine systems
- Develop Automatic Test Equipment (ATE) with full functional LabView interfaces for production testing

• Test

- High speed data acquisition systems
- Synchronized recording of load, pressure, flow acceleration, temperature, & strain
- Customizable data display screens
- Performance and durability testing
- Compliance testing – UL, EU, SAE, ASAE, ISO
- Engine testing and qualification
- Accelerated life cycle testing
- Component / board level diagnostics

• Analysis

- Design Optimization
- Simulation of Product Performance
- Reduction of Design Iterations
- Correlation of Analysis with Real World Testing
- Detailed Test Reports & Interpretation of Results

• Systems

- Hydraulic
- Pneumatic
- Electrical
- Mechanical

• Tech Pubs

- Operators manual
- Service & parts manual
- Training and safety manuals
- Work instructions
- Service bulletins
- Quick-start and troubleshooting guides



SpecSys, Inc. Offering:

- 2 CNC laser burn tables
- 4 CNC plasma & oxy burn tables
- 3 CNC metal sheet and/or plate rolls
- 6 CNC Press Brakes (up to 400 ton)
- 22 CNC Machining Centers (100,000 lb. gantry machining center)
- 15 Semi-automated bridge ports, mills, and lathes
- 7 industrial size metal fabrication band saws
- 2 large tonnage stamp presses
- 7 automation and/or robotic weld stations
- 125 MIG and/or TIG welding machines (AWS Certified Staff)
- 5 Sub-arc weld machines
- 275 jib hoists
- 18 large tonnage full span bridge cranes
- 4 paint prep blast booths
- 4 paint prep wash bays
- 7 paint booths & 1 paint oven
- 2 PLC Machinery Cycle Test Stands with hydraulic power packs
- 2 mobile data acquisition testers with hundreds of sensors.



SpecSys, Inc. Projects:

Agriculture & Forestry

Turn-key projects where several of these involved large volume quantities delivered over several years of continued production.



SpecSys, Inc. Projects:

Construction & Mining

Blast Hole Drill required 11 semi trucks to deliver.
Conveyor deliveries of 3 to 5 per week for several months.
Several hundred concrete and compaction units delivered.



SpecSys, Inc. Projects:

Railway & Utilities

Turn-Key engineering with fully vertically integrated manufacturing, says it all here.



RVI, Inc.

The heart of **SERVICE**

A full service provider of high-quality, reliable **Wire Harnesses and Control Boxes** that fosters strong collaborative relationships to support your business goals.



RVI, Inc. Offering

The technical team at **RVI, Inc.** has been designing and building harness and control box assemblies for our test equipment for over 30 years.

Certifications & Standards

- ISO 9001:2015
- IPC-610 (process per standard)
- UL (product specific)
- Safety / BCP / Information Security (up-to-date)

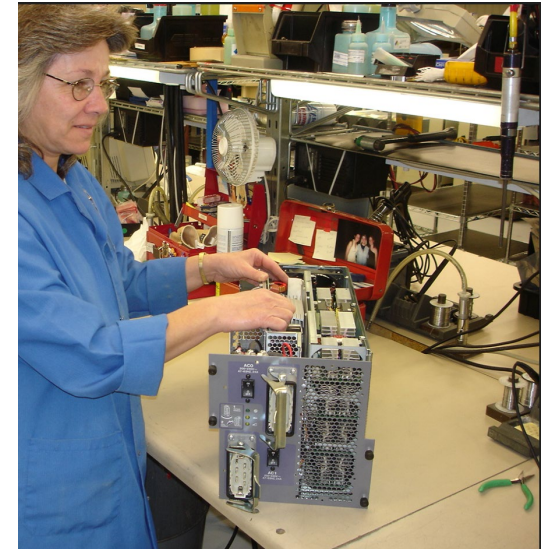
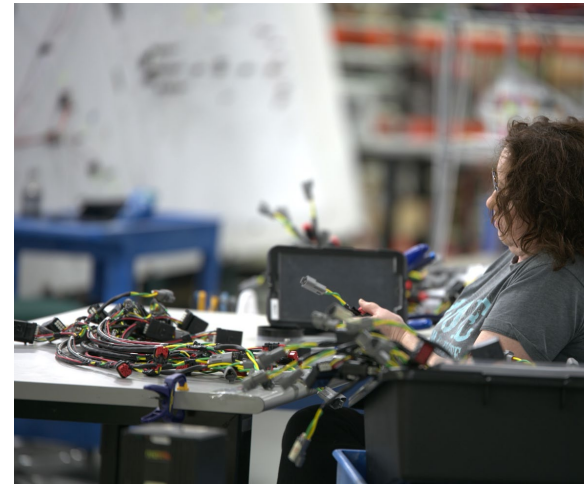
Capabilities

- Design
- Analysis
- Systems
- Controls
- Test
- Tech pubs

Services Available

- Specification Development
- Conceptual Design
- Detail Drafting & Design
- Print Generation
- Styling
- BOM Development
- Vendor Support & Supplier Selection
- Systems & Structural Testing
- Technical Publications

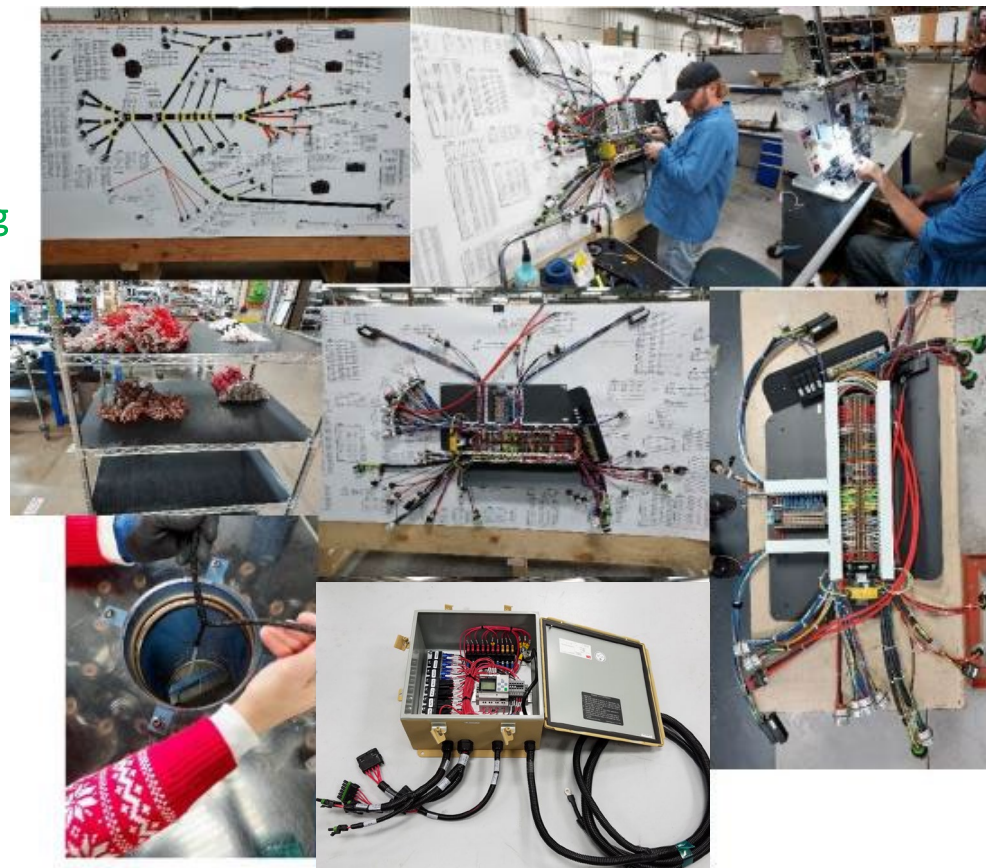
It was a natural fit when our clients began asking us to design cabling, wiring and harnessing assemblies for application in specific requirements.



RVI, Inc. Offering

Wire Harness & Control Box Manufacturing

- Schleuniger wire cutting, stripping, & labeling
- Molex pneumatic crimping
- TE automated terminating
- STAPLA ultrasonic splice welding
- Braiding and looming equipment
- Heat shrinking
- Schleuniger 16-character wire printing
- Cirrus automated testing
- Pull testing



Integral dx, Inc.



A Diverse Family of Products to Meet Your Needs



Integral dx, Inc.: Products

Integral dx, Inc. markets, sells, and services the Wald Owned Intellectual Property products, all Wald owned at the request of SpecSys, Inc. Clients.



All-Terrain Derrick



Spraypaver



Concrete Mixer Truck



5th Largest Ready-Mix OEM in the USA



Switcher Locomotive Family



Sugar Beet Piler



Coal Surface Miner



Pneumatic Static Compaction



RITALKA, Inc. Aftermarket Services

- Genuine OEM Aftermarket Parts

- Integral dx, Inc. OEM Mixers
- Schwing America, Inc. Legacy Mixers
- Mixer All-Makes
- Integral dx, Inc. OEM Spray Paver System
- Integral dx, Inc. OEM Family of Switcher Locomotives
- Integral dx, Inc. OEM ATD
- *Future products, brands, contracts, and after-delivery requests for assistance*

GENUINE
INTEGRAL *dx*
PARTS



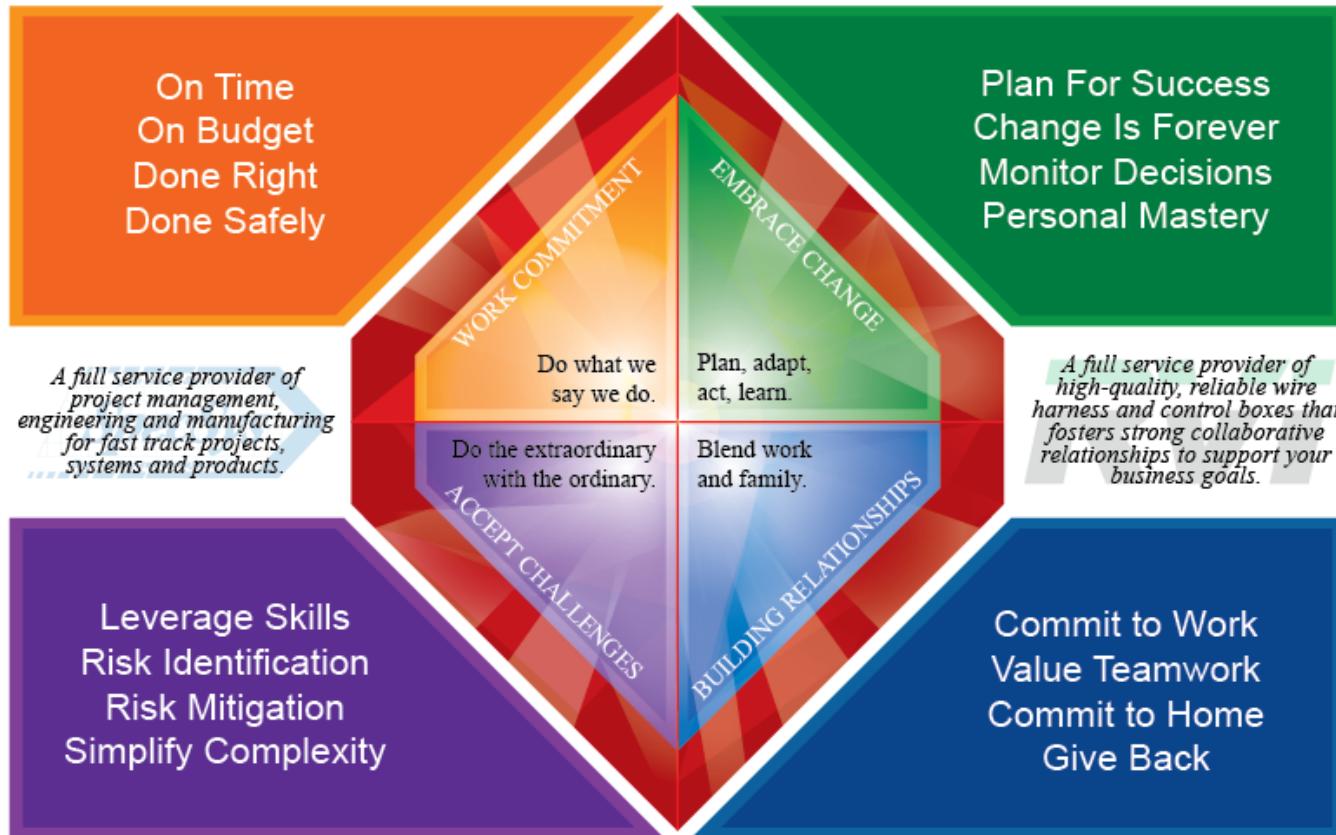
- Services:

- Field Service on OEM equipment
- Parts professional available to help identify parts needed
- Field Service for SpecSys, Inc. clients in need of assistance





Vision Statement: *Embrace those who respect, honor, and value relationships.*





The materials in this presentation have been prepared by the Ritalka family of brands and reasonable efforts have been made to ensure the accuracy of the policies, price points, dates, conditions and information provide herein as of the date of the presentation.

© 2020 Ritalka Inc. All Rights Reserved.

